

Supplement to:

Schulz, Wiebke, Ineke Maas, and Marco H. D. van Leeuwen. 2026. "Socio-Economic Advancement and Long-Term Trends in the Gender Gap in Early Career Occupational Status in France 1860–1960" *Sociological Science* 13: 332-361.

**Online Supplement to
Socio-economic Advancement and Long-term Trends in the Gender Gap
in Early Career Occupational Status in France 1860-1960**

Wiebke Schulz (corresponding author)

**Universität Bremen, Department of Life Course, Life Course Policy, and Social Integration/SOCIUM,
Germany wschulz@uni-bremen.de**

Ineke Maas

**Department of Sociology, Utrecht University & VU University Amsterdam, Amsterdam, The Netherlands
i.maas@uu.nl**

**Marco H.D. van Leeuwen, Utrecht University, The Netherlands and International Institute for Social
History, Amsterdam M.H.D.vanLeeuwen@uu.nl**

Table of content

Figure A1: Occupational information on marriage certificates for brides per year

Figure A2: Occupational information on marriage certificates for grooms per year

Figure A3: Predicted trend in the status gap – missing occupational information of brides replaced by cook

Figure A4: Predicted trend in the status gap – missing occupational information of brides replaced by maid

Figure A5: Predicted trend in the status gap – missing occupational information of brides marrying farmers replaced by farmer

Table A1: Sample selection

Table A2: Correlations between changes in contextual indicators per decade

Table A3: Number of observations across contexts

Table A4: Context-fixed-effects models of status at marriage: listwise deletion

Table A5: Gender composition and occupational status of selected occupations by period

Table A6: Context fixed effects models of status at marriage – main analyses

Table A7: Context-fixed-effects models of status at marriage: three-way interactions – main analyses

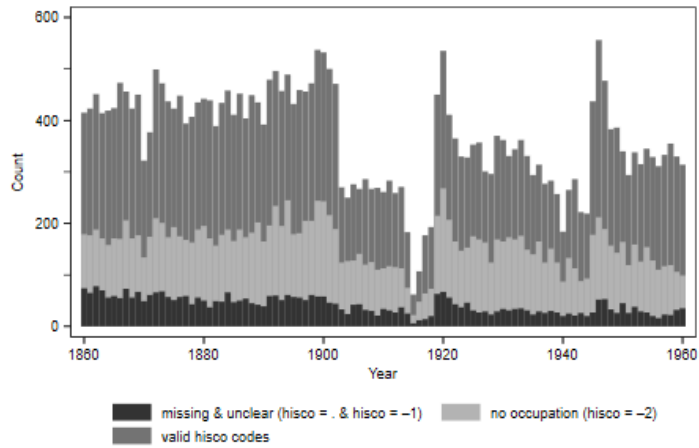


Figure A1. Occupational information on marriage certificates for brides per year (TRA data)

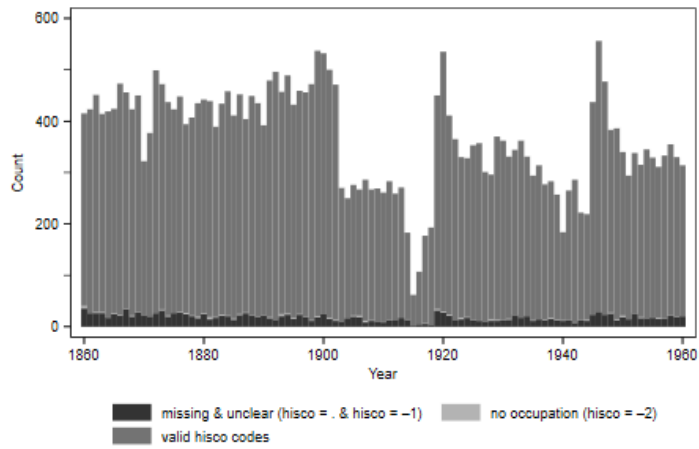


Figure A2. Occupational information on marriage certificates for grooms per year (TRA data)

Table A1: Sample selection

Step	Number of observations
0 Total number of marriages in TRA data (1803-1986)	78,357
1 Select marriages (1860-1960)	43,701
2 Select marriages in which grooms and brides were not married before & bride and groom age is less or equal 40	36,460
3 Restructure from marriages to persons	72,920
4 Select persons with valid occupational status	51,817 ^a
5 Select persons with information on type of town	51,219
Main dataset:	
5 Select persons with valid context information from the TRA data (on teacher marriages and labor market structure)	49,820 ^b
6a Select persons with valid context information on divorces (1885-1960)	30,289
6b Select persons with valid context information on steam power (1860-1938)	40,586
6c Select persons with valid context information on electricity (1912-1943)	11,356
6d Select persons with valid context information on divorces and steam power	25,597
6e Select persons with valid context information on divorces and electricity	10,008

^a 33,333 grooms and 18,484 brides; ^b 31,923 grooms and 17,897 brides.

Table A2: Correlations between changes in contextual indicators per year (p-values between brackets)

Variables	(1)	(2)	(3)	(4)	(5)	(6)	(7)	(8)
(1) Egalitarian values: Divorces	1.000							
Labor market structure, % working in:								
(2) Professional, administrative and managerial	0.008 (0.601)	1.000						
(3) Clerical, sales and service	-0.002 (0.903)	-0.068 (0.000)	1.000					
(4) Agriculture	-0.005 (0.755)	-0.152 (0.000)	-0.342 (0.000)	1.000				
(5) Manufacturing and transport	0.003 (0.864)	-0.263 (0.000)	-0.365 (0.000)	-0.642 (0.000)	1.000			
(6) Steam power	-0.002 (0.920)	-0.006 (0.657)	-0.002 (0.861)	-0.014 (0.276)	0.018 (0.170)	1.000		
(7) Electricity	-0.050 (0.036)	-0.028 (0.239)	0.060 (0.012)	-0.036 (0.129)	0.003 (0.910)	-0.002 (0.922)	1.000	
(8) Educational expansion	-0.002 (0.880)	-0.012 (0.327)	0.008 (0.517)	0.009 (0.517)	-0.009 (0.463)	-0.001 (0.951)	0.055 (0.022)	1.000

Table A3 Number of observations across contexts (N=948)

	< 25	>= 25 & <= 50	> 50 & <= 75	> 75
Number of observations	327	275	156	190
	34.5%	29%	16.5%	20%

Table A4: Context-fixed-effects models of status at marriage: listwise deletion.

	Model 1		Model 2		Model 3		Model 4		Model 5	
Male	1.944***	(0.309)	0.589	(0.301)	0.719*	(0.308)	1.251**	(0.458)	0.595	(0.326)
Male x Period										
1860 - 1869	ref.		ref.		ref.				ref.	
1870 - 1879	0.287	(0.447)	0.243	(0.421)	0.245	(0.421)	ref.		0.282	(0.420)
1880 - 1889	0.409	(0.449)	0.381	(0.426)	0.360	(0.426)	0.000	(.)	0.419	(0.426)
1890 - 1899	0.527	(0.441)	0.589	(0.422)	0.547	(0.422)	0.100	(0.542)	0.636	(0.422)
1900 - 1909	0.613	(0.507)	0.849	(0.483)	0.772	(0.484)	0.253	(0.588)	0.933	(0.486)
1910 - 1919	0.232	(0.756)	0.155	(0.741)	0.045	(0.741)	0.085	(0.833)	0.193	(0.750)
1920 - 1929	-0.428	(0.574)	-0.151	(0.544)	-0.357	(0.552)	-0.691	(0.644)	-0.222	(0.558)
1930 - 1939	-1.248*	(0.619)	-0.691	(0.593)	-0.899	(0.601)	-1.232	(0.703)	-0.873	(0.621)
1940 - 1949	-2.509***	(0.597)	-1.582*	(0.645)	-1.810**	(0.653)	-0.005	(1.351)	-1.632*	(0.697)
1950 - 1960	-3.753***	(0.613)	-3.202***	(0.588)	-3.511***	(0.607)	-4.015***	(0.743)	-3.326***	(0.674)
Male x Educational expansion					0.380*	(0.174)				
Male x Egalitarian value: Divorces							-0.037	(0.069)		
Male x Occupational structure (ref. Manufacturing and transport)									ref.	
Professional, administrative and managerial									-0.090	(0.197)
Clerical, sales and service									0.213	(0.162)
Agriculture									-0.232	(0.158)
Experience/10			1.431***	(0.168)	1.450***	(0.168)	1.066***	(0.248)	1.447***	(0.168)
Signature (1/0)			0.933***	(0.188)	0.930***	(0.188)	0.331	(0.327)	0.942***	(0.188)
Status father			0.436***	(0.008)	0.436***	(0.008)	0.443***	(0.011)	0.436***	(0.008)
Status mother										
Male x World War I			-0.981	(1.837)	-1.024	(1.834)	-1.493	(1.779)	-1.039	(1.836)
Male x World War II			-0.725	(0.533)	-0.715	(0.532)	-0.884	(0.849)	-0.721	(0.533)
Constant	54.809***	(0.111)	56.381***	(0.306)	56.394***	(0.306)	56.845***	(0.441)	56.383***	(0.306)
N	21203		21203		21203		12496		21203	

Source: TRA data; own computations. Note: Standard errors in parentheses clustered at marriage level; controlled for type of town. * p<0.05, ** p<0.01, *** p<0.001

Table A4 continued: Context-fixed-effects models of status at marriage: listwise deletion

	Model 6		Model 7		Model 8		Model 9	
Male	0.693*	(0.313)	1.549	(1.126)	1.341**	(0.497)	1.376	(1.139)
Male x Period								
1860 - 1869	ref.							
1870 - 1879	0.313	(0.435)						
1880 - 1889	0.375	(0.432)			ref.			
1890 - 1899	0.663	(0.430)			0.100	(0.546)		
1900 - 1909	0.811	(0.493)			0.401	(0.600)		
1910 - 1919	0.647	(0.770)	ref.		-0.295	(0.844)	ref.	
1920 - 1929	-0.181	(0.570)	-0.770	(1.207)	-0.827	(0.678)	-0.616	(1.257)
1930 - 1939	-0.735	(0.659)	-1.278	(1.251)	-1.358	(0.777)	-1.091	(1.273)
1940 - 1949			0.931	(2.462)			-0.195	(2.469)
1950 - 1960								
Male x Educational expansion					0.145	(0.274)	0.285	(0.346)
Male x Egalitarian value: Divorces					0.043	(0.071)	-0.179	(0.475)
Male x Occupational structure (ref. Manufacturing and transport)					ref.		ref.	
Professional, administrative and managerial					-0.095	(0.315)	-0.402	(0.460)
Clerical, sales and service					0.390	(0.235)	-0.076	(0.428)
Agriculture					-0.433	(0.245)	-0.893	(0.477)
Male x Steam power	0.009	(0.155)			-0.115	(0.169)		
Male x Electricity			-0.167	(0.379)			-0.043	(0.392)
Experience/10	0.977***	(0.170)	0.114	(0.453)	1.180***	(0.250)	0.746	(0.465)
Signature (1/0)	0.950***	(0.183)	-0.194	(0.794)	0.074	(0.318)	-0.254	(0.805)
Status father	0.451***	(0.010)	0.452***	(0.018)	0.450***	(0.013)	0.453***	(0.019)
Male x World War I	-1.340	(1.789)	1.312	(2.407)	-1.091	(1.833)	1.655	(2.504)
Male x World War II			-0.662	(1.523)			0.066	(1.540)
Constant	54.353***	(0.324)	57.787***	(0.891)	55.823***	(0.461)	58.104***	(0.901)
N	16,000		4,204		9,652		4,089	

Source: TRA data; own computations. Note: Standard errors in parentheses clustered at marriage level; controlled for type of town, not controlled for mother's status.
* p<0.05, ** p<0.01, *** p<0.001

Table A5. Gender composition and occupational status of selected occupations by period. Percentage male by occupation and decade, with HISCAM status scores reported at the occupation level (3-digit).

	period										Total
	1860-69	1870-79	1880-89	1890-99	1900-09	1910-19	1920-29	1930-39	1940-49	1950-60	
HISCAM Score and HISCO 3-digit Occupation											
(32.1) Field Crop and Vegetable Farm Workers	100.0	100.0						0.0			66.7
(32.5) Charworkers, Cleaners and Related Workers	0.0	11.1	20.0	23.1	0.0		0.0	25.0	15.8	4.8	11.1
(37.5) General Farm Workers	65.4	66.7	67.2	60.8	63.4	56.1	58.0	64.9	61.7	63.9	62.8
(42.1) Workers Not Elsewhere Classified	62.5	58.7	58.6	57.1	56.5	52.7	59.0	58.9	69.6	53.6	58.7
(43.6) Weavers and Related Workers	53.5	49.0	42.5	35.3	44.1	27.3	17.1	25.5	5.0	12.7	31.2
(44.4) Bricklayers, Stonemasons and Tile Setters	100.0	100.0	100.0	100.0	100.0	100.0	100.0	100.0	100.0	100.0	100.0
(46.6) Maids and Related Housekeeping Service	41.3	40.6	35.7	36.0	35.9	17.6	17.9	15.6	3.7	3.0	24.7
(47.9) Launderers, Dry-Cleaners and Pressers	3.4	4.3	3.5	7.4	6.7	5.2	3.8	10.7	5.6	15.8	6.6
(48.2) Carpenters, Joiners and Parquetry Workers	100.0	100.0	100.0	100.0	100.0	100.0	100.0	100.0	100.0	100.0	100.0
(48.7) General Farmers Not Elsewhere Classified	85.4	82.5	84.4	88.2	90.0	88.5	94.7	100.0	95.0	88.2	89.7
(49.5) Motor-Vehicle Drivers	100.0	100.0	100.0	100.0	100.0	100.0	100.0	100.0	100.0	100.0	100.0
(50.7) Tailors and Dressmakers	8.0	6.8	7.3	5.5	7.4	6.7	6.9	5.0	3.6	4.1	6.1
(53.5) Cooks	4.9	8.9	3.9	10.9	6.9	13.8	25.8	18.0	42.3	64.3	20.0
(56.6) Clerks Not Elsewhere Classified	100.0	100.0	100.0	100.0	100.0	100.0	98.2	100.0	100.0	100.0	99.8

(56.8) Machinery Fitters and Machine Assemblers	91.7	77.8	73.7	81.1	83.3	88.9	88.8	94.7	87.9	82.6	85.0
(60.9) General Farmers	70.9	72.4	70.0	70.8	72.0	70.1	69.7	70.1	60.7	66.5	69.3
(62.0) Professional Nurses			50.0	50.0	50.0	60.0	30.8	42.9	43.5	17.0	43.0
(62.1) Military / Army Officers	100.0	100.0	100.0	100.0	100.0	100.0	100.0	100.0	100.0	98.6	99.9
(66.4) Salesmen, Shop Assistants and Demonstrators	81.6	83.8	81.8	80.5	77.7	56.9	47.3	39.8	28.6	18.0	59.6
(70.5) Primary Education Teachers	73.7	75.8	70.9	55.2	45.5	33.3	36.2	37.3	40.0	32.6	50.0
(71.7) Nursing Personnel		50.0				0.0		66.7	35.3	31.8	36.8
(75.3) Clerical and Related Workers	100.0	100.0		100.0	100.0	50.0	3.7	8.1	3.2	1.4	51.8
(75.6) Stenographers, Typists and Teletypists		100.0	100.0	100.0	50.0	13.3	4.1	2.8	2.8	1.5	41.6
(82.1) General Managers	100.0	100.0		75.0	100.0	100.0	100.0	100.0	88.9	100.0	96.0
(88.4) Electrical and Electronics Engineers					100.0		100.0	100.0	100.0	100.0	100.0
(89.8) National Legislators (Legislative Officials)			100.0	100.0			100.0				100.0
(91.2) Judges					100.0					100.0	100.0
(93.3) Chemical Engineers						100.0		100.0	100.0	100.0	100.0
(95.6) Engineers	100.0	100.0		100.0	100.0		100.0	100.0	100.0		100.0
(96.7) Doctors / Physicians	100.0	100.0	100.0	100.0	100.0	75.0	93.3	100.0	86.7	86.4	94.1
(99.0) Jurists	100.0		100.0	100.0			100.0		100.0	100.0	100.0
(99.0) University and Higher Education Teachers				100.0		100.0		50.0		50.0	75.0

Table A6: Context fixed effects models of status at marriage

	Model 1	Model 2	Model 3	Model 4	Model 5
Male	1.554*	0.493	0.651	2.017*	0.439
	(0.760)	(0.730)	(0.733)	(0.980)	(0.802)
Male x Period					
1860 - 1869	ref.	ref.	ref.		ref.
1870 - 1879	1.038**	0.937**	0.917**		0.934**
	(0.297)	(0.306)	(0.306)		(0.307)
1880 - 1889	1.293**	1.235**	1.207**	ref.	1.313**
	(0.303)	(0.312)	(0.312)		(0.314)
1890 - 1899	1.411**	1.414**	1.379**	0.014	1.495**
	(0.300)	(0.304)	(0.305)	(0.410)	(0.305)
1900 - 1909	1.428**	1.506**	1.446**	0.089	1.560**
	(0.336)	(0.337)	(0.338)	(0.430)	(0.340)
1910 - 1919	0.947*	0.453	0.380	-0.686	0.616
	(0.410)	(0.489)	(0.489)	(0.566)	(0.496)
1920 - 1929	-0.443	-1.439*	-1.539*	-2.313**	-1.273
	(0.370)	(0.652)	(0.653)	(0.717)	(0.658)
1930 - 1939	-1.141**	-2.044**	-2.160**	-2.893**	-1.703*
	(0.409)	(0.670)	(0.670)	(0.735)	(0.684)
1940 - 1949	-3.500**	-4.242**	-4.381**	-3.834**	-3.715**
	(0.404)	(1.040)	(1.041)	(1.231)	(1.061)
1950 - 1960	-3.258**	-4.121**	-4.334**	-5.370**	-3.591**
	(0.430)	(1.053)	(1.056)	(1.104)	(1.089)
Male x Educational expansion			0.300*		
			(0.135)		
Male x Egalitarian value: Divorces				0.003	
				(0.074)	
Male x HISCO 1-digit (ref. 7-9 manufacturing and transport)					ref.
0-2 professional, administrative and managerial					-0.351*
					(0.146)
3-5 clerical, sales and service					-0.323*
					(0.159)
6 agriculture					-0.414
					(0.244)
Signature (1/0)		1.297**	1.296**	0.967**	1.299**
		(0.145)	(0.145)	(0.239)	(0.145)
Status father		0.258**	0.258**	0.267**	0.258**
		(0.006)	(0.006)	(0.008)	(0.006)
Experience/10		3.209**	3.224**	3.509**	3.179**
		(0.546)	(0.546)	(0.788)	(0.547)
Experience/10 sq		-0.709**	-0.710**	-0.799**	-0.700**
		(0.188)	(0.188)	(0.274)	(0.188)
Male x World War I		1.256*	1.232*	0.635	1.246*
		(5.25)	(0.526)	(0.531)	(0.526)
Male x World War II		-0.149	-0.141	-0.114	-0.139
		(0.805)	(0.805)	(0.794)	(0.804)
Constant	53.928**	52.488**	52.477**	53.008**	52.507**
	(0.077)	(0.403)	(0.404)	(0.558)	(0.404)
N	49,820	49,820	49,820	30,289	49,820

Data: TRA Data (multiply imputed); own computations. Note: Standard errors in parentheses clustered at marriage level; Context: teacher marriages in department of birth/5-year period at age 12, steam, electricity, divorces, HISCO 1-digit in department/decade. Controlled for type of town. * p<0.05, ** p<0.01

Table A6 continued: Context fixed effects models of status at marriage

	Model 6	Model 7	Model 8	Model 9
Male	0.278 (0.765)	2.794 (1.822)	2.268* (1.125)	2.338 (2.208)
Male x Period				
1860 - 1869	ref.			
1870 - 1879	1.113** (0.311)			
1880 - 1889	1.403** (0.313)		ref.	
1890 - 1899	1.778** (0.309)		-0.035 (0.410)	
1900 - 1909	1.860** (0.348)		0.072 (0.437)	
1910 - 1919	1.146* (0.511)	ref.	-0.817 (0.579)	ref.
1920 - 1929	-0.313 (0.677)	-1.192 (0.718)	-2.719** (0.742)	-1.600* (0.783)
1930 - 1939	-0.816 (0.707)	-1.717* (0.759)	-3.015** (0.775)	-2.013* (0.810)
1940 - 1949	-1.711 (1.220)	-3.074** (1.183)	-3.631** (1.279)	-2.700* (1.327)
1950 - 1960				
Male x Educational expansion			0.118 (0.223)	0.016 (0.295)
Male x Egalitarian value: Divorces			0.139 (0.086)	0.053 (0.377)
Male x HISCO 1-digit (ref. 7-9 manufacturing and transport)			ref.	ref.
0-2 professional, administrative and managerial			-0.468* (0.213)	-0.281 (0.353)
3-5 clerical, sales and service			-0.350 (0.240)	-0.204 (0.520)
6 agriculture			-0.926* (0.363)	0.124 (0.747)
Male x Steam power	-0.363* (0.154)		-0.211 (0.167)	
Male x Electricity		-0.482 (0.390)		0.096 (0.458)
Signature (1/0)	1.437** (0.147)	0.451 (0.461)	1.008** (0.240)	0.503 (0.495)
Status father	0.258** (0.007)	0.273** (0.014)	0.266** (0.009)	0.274** (0.016)
Experience/10	1.905** (0.641)	5.740** (1.411)	3.207** (0.882)	5.652** (1.557)
Experience/10 sq	-0.334 (0.219)	-1.526** (0.476)	-0.682* (0.309)	-1.474** (0.533)
Male x World War I	0.728 (0.530)		1.171* (0.539)	
Male x World War II	-0.181 (0.797)	-0.040 (0.791)	-0.245 (0.816)	-0.203 (0.814)
Constant	51.802** (0.454)	54.387** (1.045)	52.207** (0.626)	53.930** (1.131)
N	40586	11356	25597	10008

Data: TRA Data (multiply imputed); own computations. Note: Standard errors in parentheses clustered at marriage level; Context: teacher marriages in department of birth/5-year period at age 12, steam, electricity, divorces, HISCO 1-digit in department/decade. Controlled for type of town.

* p<0.05, ** p<0.01

Table A7: Context-fixed-effects models of status at marriage: three-way interactions

	Model 1	Model 2	Model 3	Model 4
Male	2.421*	2.588	2.373	2.171
	(1.135)	(2.231)	(2.221)	(2.213)
Male x Educational expansion	0.103	0.019	0.085	0.019
	(0.223)	(0.295)	(0.331)	(0.294)
Male x Egalitarian value: Divorces	0.161	0.105	0.049	0.207
	(0.086)	(0.382)	(0.376)	(0.465)
Male x Steam power	0.267			
	(0.227)			
Male x HISCO 1-digit (ref. 7-9 manufacturing and transport)				
0-2 professional, administrative and managerial	-0.368	-0.295	-0.250	-0.197
	(0.218)	(0.355)	(0.356)	(0.355)
3-5 clerical, sales and service	-0.087	-0.272	-0.235	-0.106
	(0.242)	(0.529)	(0.521)	(0.534)
6 agriculture	-0.498	-0.096	0.107	0.303
	(0.368)	(0.796)	(0.747)	(0.774)
Male x Electricity		0.444	0.100	0.081
		(0.665)	(0.459)	(0.459)
Male x Steam power x HISCO major groups (ref. 7-9 manufacturing and transport)				
0-2 professional, administrative and managerial	0.084			
	(0.164)			
3-5 clerical, sales and service	-0.537**			
	(0.192)			
6 agriculture	0.302			
	(0.291)			
Male x Electricity x HISCO 1-digit (ref. 7-9 manufacturing and transport)				
0-2 professional, administrative and managerial		-0.089		
		(0.352)		
3-5 clerical, sales and service		-0.430		
		(0.423)		
6 agriculture		-0.737		
		(0.658)		
Male x Educational expansion x HISCO 1-digit (ref. 7-9 manufacturing and transport)				
0-2 professional, administrative and managerial			-0.171	
			(0.259)	
3-5 clerical, sales and service			0.184	
			(0.322)	
6 agriculture			0.169	
			(0.378)	
Male x Egalitarian value: Divorces x HISCO 1-digit (ref. 7-9 manufacturing and transport)				
0-2 professional, administrative and managerial				-0.316
				(0.327)
3-5 clerical, sales and service				-0.062
				(0.395)
6 agriculture				-0.124
				(0.522)
N	25,597	10,008	10,008	10,008

Source: TRA data (multiply imputed); own computations. Note: Standard errors in parentheses clustered at marriage level; Controlled for male, male x period, experience and experience squared, signature, status father, type of town, male x World War I and male x World War II. * p<0.05; ** p<0.01

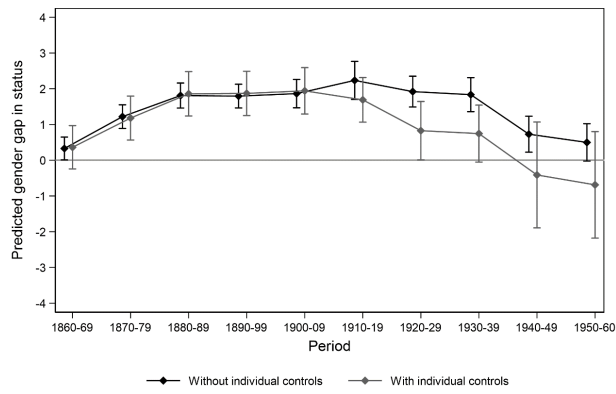


Figure A3 Predicted trend in the status gap – missing occupational information of brides replaced by cook. Without individual controls (solid black) and controlled for experience, father's and mother's status, signature and type of town (solid grey).

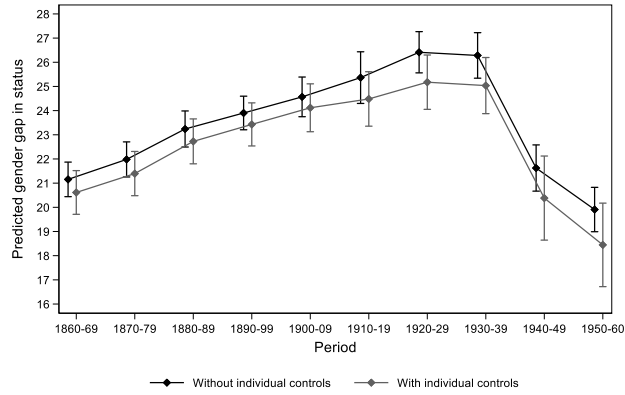


Figure A4 Predicted trend in the status gap – missing occupational information of brides replaced by maid. Without individual controls (solid black) and controlled for experience, father’s and mother’s status, signature and type of town (solid grey).

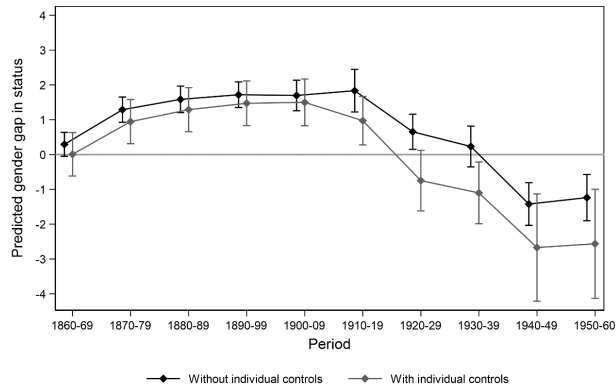


Figure A5 Predicted trend in the status gap – missing occupational information of brides marrying farmers replaced by farmer. Without individual controls (solid black) and controlled for experience, father's and mother's status, signature and type of town (solid grey).