

Supplement to:

Gioachin, Filippo, and Anna Zamberlan. 2024. "Breaking Barriers or Persisting Traditions? Fertility histories, occupational achievements, and intergenerational mobility of Italian women." *Sociological Science* 11: 67-90.

Breaking Barriers or Persisting Traditions?

Fertility histories, occupational achievements, and intergenerational mobility of Italian women

Filippo Gioachin: Department of Sociology and Social Research, University of Trento, Italy,

filippo.gioachin@unitn.it

Anna Zamberlan: Department of Sociology, Ludwig-Maximilians-Universität München, Germany,

anna.zamberlan@lmu.de

Online Supplement

List of figures and tables

Figure S1: Intergenerational relative mobility in Italy by sex, career years, and birth cohorts. Elasticity and Rank-rank slope using ISEI score.

Table S1: Stepwise sample selection for women.

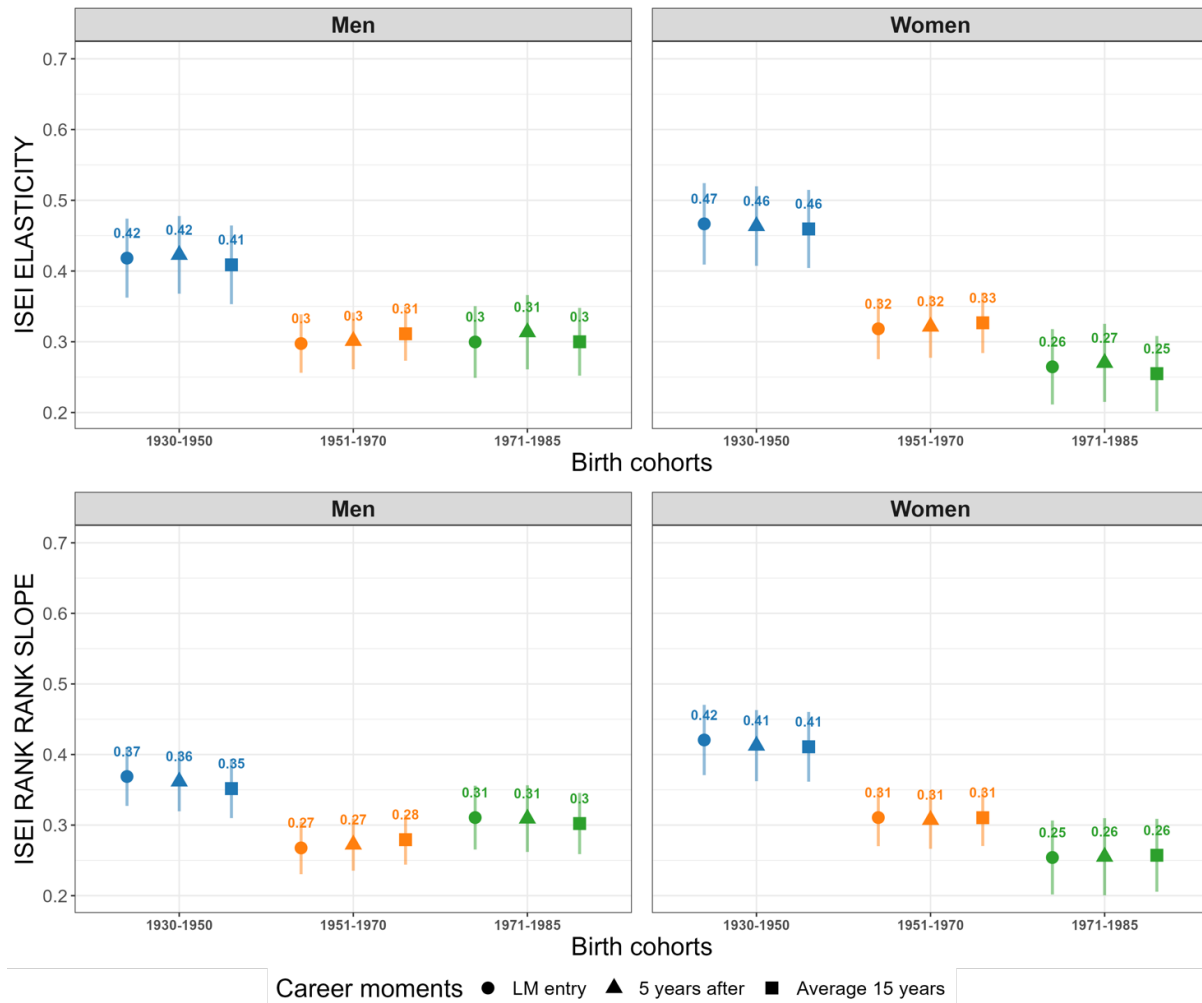
Table S2: Stepwise sample selection for men.

Table S3: Descriptive statistics for the analytical sample of women (*Sample: achievements over the first 15 career years*).

Figure S2: Women's predicted employment and contractual arrangements over their career. Growth curves estimates by cohort and classes of origin.

Figure S3: ISEI attainments over the career by classes of origin. Growth curves estimates by cohort and fertility group.

Figure S1: Intergenerational relative mobility in Italy by sex, career years, and birth cohorts. Elasticity and Rank-rank slope using ISEI score.



Source: ISTAT Multipurpose household survey (2016).
N men: 7,012; N women: 5,931.

Table S1: Stepwise sample selection for women.

Women	Individuals	Spells	% ind.
FSS 2016	12714	-	100
Have work experience	9392	23260	73.9
No missing info for ISEI	8913	106738	70.1
	Individuals	Person-Years	% ind.
Person-years transformation	8913	390672	70.1
Valid jobs (after the end of formal education)	8512	206012	66.9
Born between 1930-1985 and 1st job when aged 16-35	6625	172708	52.1
Sample: UNIDIFF (right censoring at 15 years and missing deletion)	5931	79029	46,6
Sample: achievements over 15 years (right censoring at 15 years and missing deletion)	5775	64075 (77637 with unemployed)	45.4

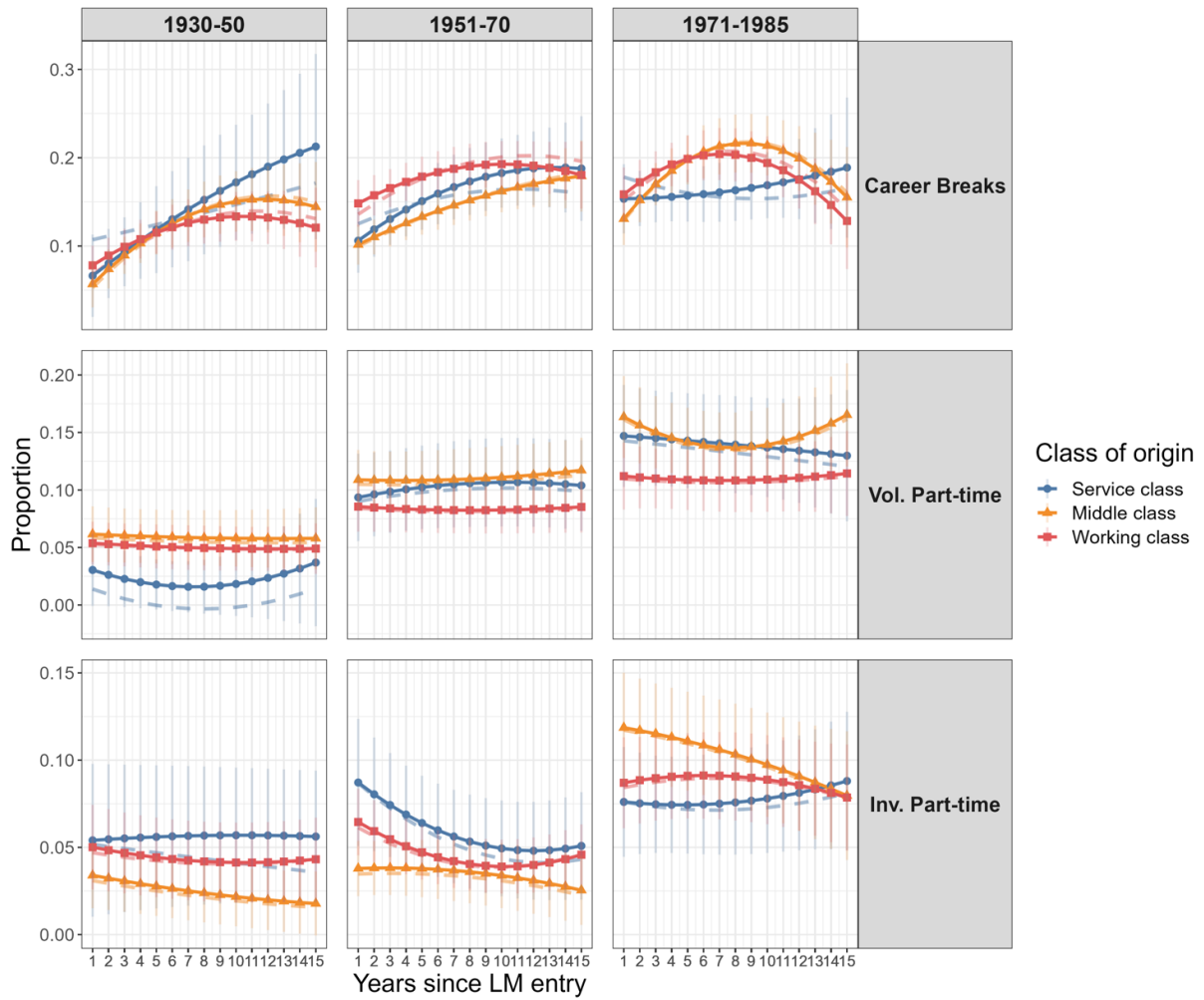
Table S2: Stepwise sample selection for men.

Men	Individuals	Spells	% ind.
FSS 2016	12039	-	100
Have work experience	10809	28249	89.8
No missing info for ISEI	10105	26219	83.9
	Individuals	Person-Years	% ind.
Person-years transformation	10105	527849	83.9
Valid jobs (after the end of formal education)	9738	287950	80.9
Born between 1930-1985 and 1st job when aged 16-35	7848	246321	65.2
Sample: UNIDIFF (right censoring at 15 years and missing deletion)	7012	100224	58.2

Table S3: Descriptive statistics for the analytical sample of women (*Sample: achievements over the first 15 career years*).

	Birth cohorts			
	1930-1950	1951-1970	1971-1985	Total
<i>N person-year</i>	15,114 (23.6%)	29,915 (46.7%)	19,046 (29.7%)	64,075
<i>Time since LM entry</i>	7.535 (4.326)	7.701 (4.338)	6.992 (4.174)	7.451 (4.298)
<i>ISEI (missing if out of LM)</i>	40.321 (16.810)	45.195 (16.497)	45.182 (15.483)	44.041 (16.408)
<i>Parental highest class:</i>				
Service class	1,623 (10.7%)	5,608 (18.7%)	4,482 (23.5%)	11,713 (18.3%)
Middle class	6,214 (41.1%)	11,684 (39.1%)	7,040 (37.0%)	24,938 (38.9%)
Working class	7,277 (48.1%)	12,623 (42.2%)	7,524 (39.5%)	27,424 (42.8%)
<i>Parental highest education:</i>				
Tertiary or more	595 (3.9%)	1,933 (6.5%)	1,640 (8.6%)	4,168 (6.5%)
Upper secondary	1,145 (7.6%)	4,961 (16.6%)	6,016 (31.6%)	12,122 (18.9%)
Up to lower secondary	13,374 (88.5%)	23,021 (77.0%)	11,390 (59.8%)	47,785 (74.6%)
<i>Educational achievement:</i>				
No education	1,224 (8.1%)	86 (0.3%)	21 (0.1%)	1,331 (2.1%)
Up to lower secondary	8,642 (57.2%)	10,003 (33.4%)	3,677 (19.3%)	22,322 (34.8%)
Upper secondary	3,757 (24.9%)	13,956 (46.7%)	10,581 (55.6%)	28,294 (44.2%)
Bachelor's degree	256 (1.7%)	1,093 (3.7%)	1,181 (6.2%)	2,530 (3.9%)
Master's degree or more	1,235 (8.2%)	4,777 (16.0%)	3,586 (18.8%)	9,598 (15.0%)
<i>Fertility history</i>				
No motherhood	2,517 (16.7%)	5,483 (18.3%)	6,017 (31.6%)	14,017 (21.9%)
Early motherhood	5,524 (36.5%)	10,427 (34.9%)	5,397 (28.3%)	21,348 (33.3%)
Late motherhood	7,073 (46.8%)	14,005 (46.8%)	7,632 (40.1%)	28,710 (44.8%)
<i>Age at LM entrance</i>	22.190 (5.078)	23.234 (4.941)	23.789 (4.261)	23.153 (4.819)
<i>Place of Birth</i>				
Same municipality of residency	6,418 (42.5%)	11,612 (38.8%)	5,037 (26.4%)	23,067 (36.0%)
Other Italian municipality	8,126 (53.8%)	16,015 (53.5%)	11,747 (61.7%)	35,888 (56.0%)
Other state	570 (3.8%)	2,288 (7.6%)	2,262 (11.9%)	5,120 (8.0%)
<i>Citizenship</i>				
Italian	14,948 (98.9%)	28,646 (95.8%)	17,444 (91.6%)	61,038 (95.3%)
Foreigner	166 (1.1%)	1,269 (4.2%)	1,602 (8.4%)	3,037 (4.7%)
<i>Macro-region</i>				
North-West	3,864 (25.6%)	7,510 (25.1%)	4,736 (24.9%)	16,110 (25.1%)
North-East	4,399 (29.1%)	8,975 (30.0%)	6,008 (31.5%)	19,382 (30.2%)
Centre	2,656 (17.6%)	5,867 (19.6%)	3,388 (17.8%)	11,911 (18.6%)
South	3,303 (21.9%)	5,760 (19.3%)	3,749 (19.7%)	12,812 (20.0%)
Islands	892 (5.9%)	1,803 (6.0%)	1,165 (6.1%)	3,860 (6.0%)
<i>Already mum at LM entry?</i>	0.144 (0.352)	0.125 (0.331)	0.054 (0.227)	0.109 (0.311)
<i>Number of children</i>	0.764 (1.033)	0.650 (0.889)	0.406 (0.720)	0.604 (0.891)
<i>Family status</i>				
Single	6,887 (45.6%)	12,541 (41.9%)	10,479 (55.0%)	29,907 (46.7%)
Cohabitation	47 (0.3%)	470 (1.6%)	689 (3.6%)	1,206 (1.9%)
Marriage	8,109 (53.7%)	15,911 (53.2%)	6,798 (35.7%)	30,818 (48.1%)
Separated/Divorced	71 (0.5%)	993 (3.3%)	1,080 (5.7%)	2,144 (3.3%)
<i>Time since 1st childbirth</i>				
0/no children	8,558 (56.6%)	17,527 (58.6%)	13,669 (71.8%)	39,754 (62.0%)
1yr	582 (3.9%)	1,219 (4.1%)	773 (4.1%)	2,574 (4.0%)
2yr	552 (3.7%)	1,204 (4.0%)	723 (3.8%)	2,479 (3.9%)
3/4yr	1,085 (7.2%)	2,228 (7.4%)	1,213 (6.4%)	4,526 (7.1%)
5/7yr	1,454 (9.6%)	2,777 (9.3%)	1,249 (6.6%)	5,480 (8.6%)
8/14yr	2,101 (13.9%)	3,680 (12.3%)	1,216 (6.4%)	6,997 (10.9%)
15+yr	782 (5.2%)	1,280 (4.3%)	203 (1.1%)	2,265 (3.5%)

Figure S2: Women's predicted employment and contractual arrangements over their career. Growth curves estimates by cohort and classes of origin.

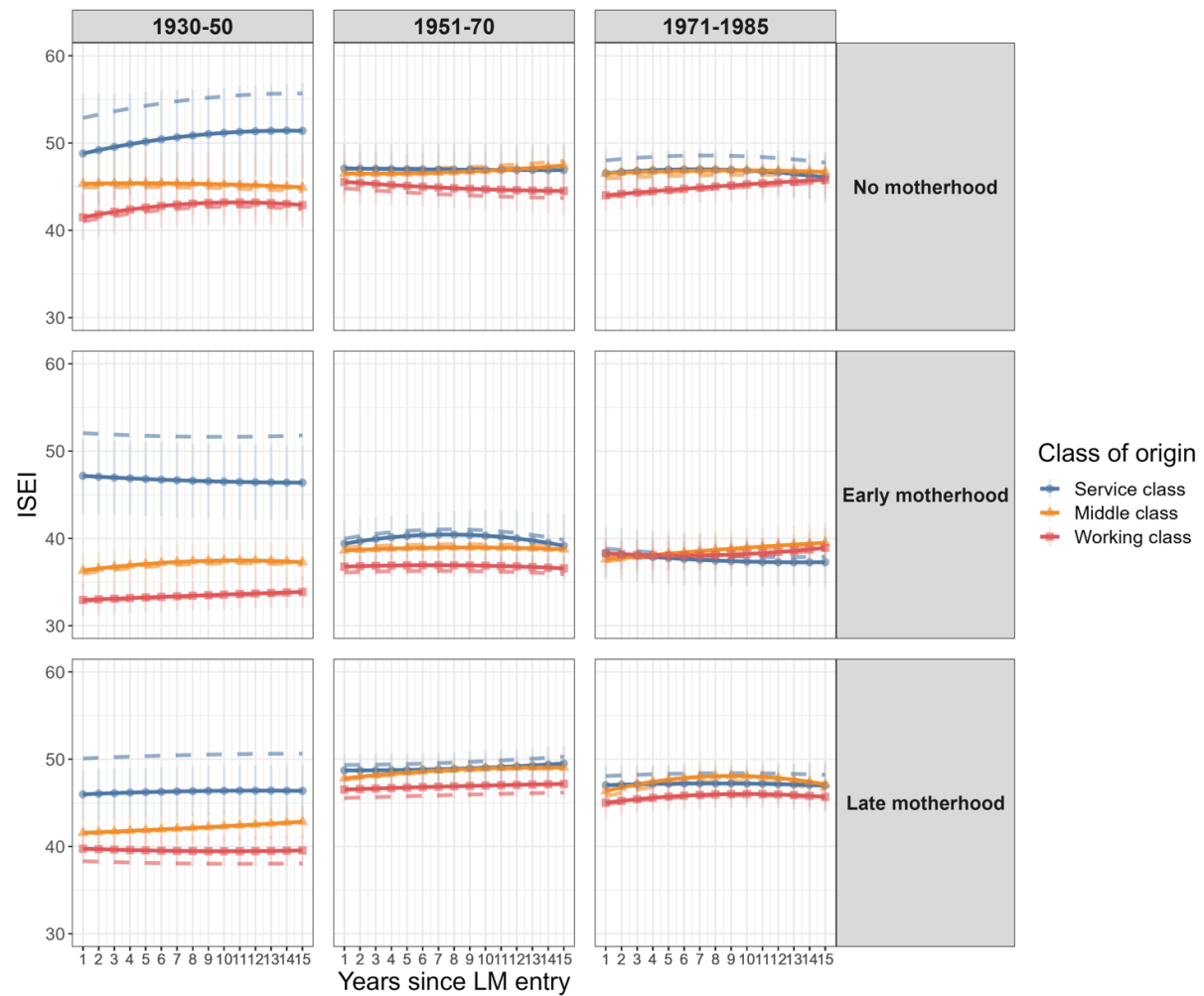


Source: ISTAT Multipurpose Household Survey (2016).

Notes: Predicted TESO in dashed lines.

N: 5,775, women only.

Figure S3: ISEI attainments over the career by classes of origin. Growth curves estimates by cohort and fertility group.



Source: ISTAT Multipurpose Household Survey (2016).

Notes: predicted TESO in dashed lines.

N: 5,775, women only.