

Supplement to:

Lu, Xuege (Cathy), Shinan Wang, and Letian Zhang.
2023. “Homophily, Setbacks, and the Dissolution
of Heterogeneous Ties: Evidence from Professional
Tennis.” *Sociological Science* 10: 227-250.

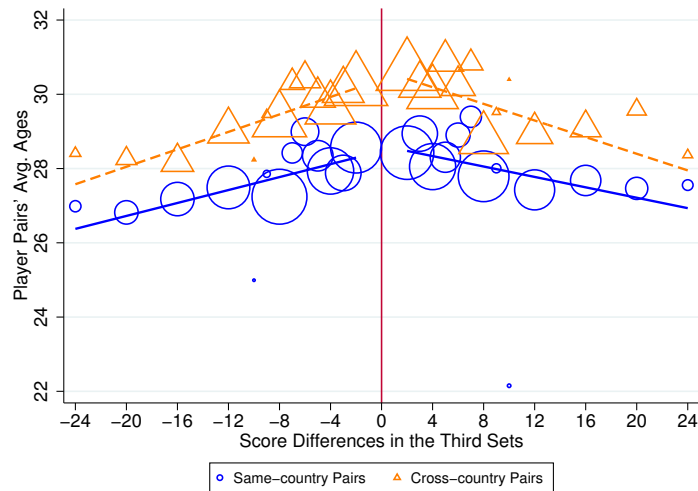


Figure S.1: Avg. Ages in Player Pairs

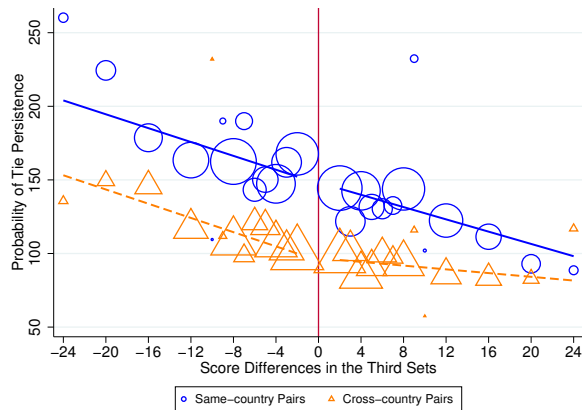


Figure S.2: Avg. Ranks in Player Pairs

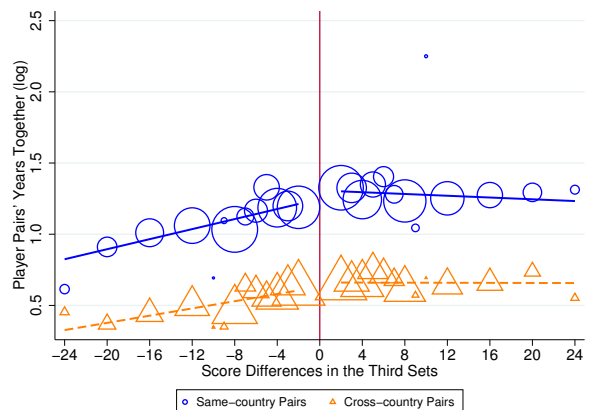


Figure S.3: Number of Years Playing Together (log) for Player Pairs

Note: These three graphs show that same-country and cross-country player pairs who win and those who lose in a close third set have parallel trends for average age, rank, and number of years playing together. There is no sizable drop at the cutoff point. Same-country and cross-country pairs are therefore comparable after we control for these general characteristics in all models. (N= 10,207; Source: Panel A)

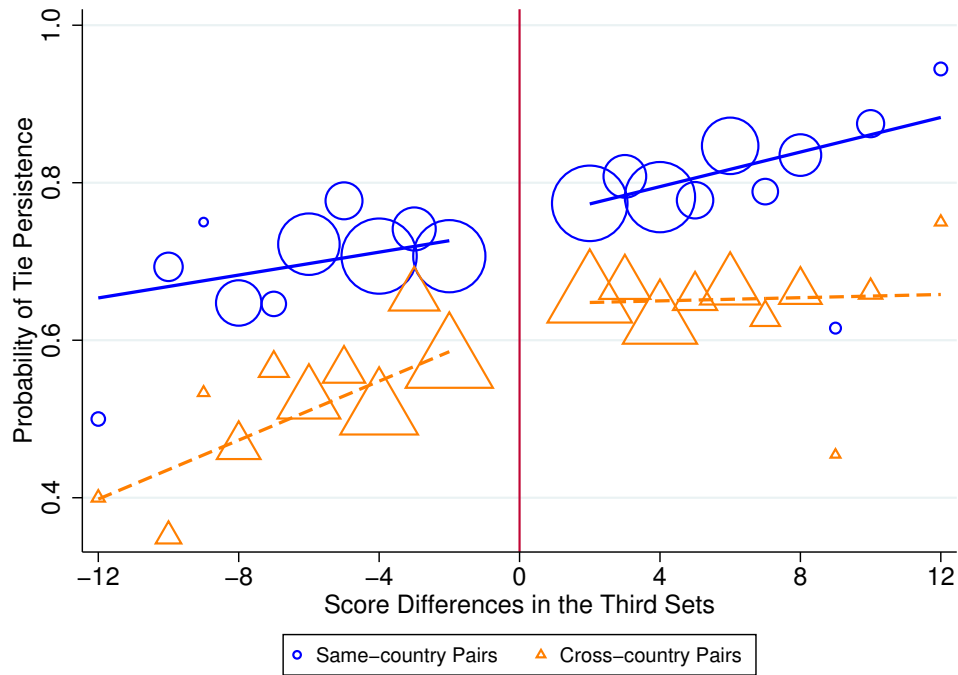


Figure S.4: Robustness Check on the Validity of Placebo Test

Note: The graph replicates Figure 5. The x-axis shows the score differences between each player pair in the close third sets. To normalize the scores, we multiply the point differences of a regular third set by 2, so that they are comparable to a 10-point tiebreaker. This is a more conservative version of Figure 5, in which we multiply the point differences by 4. The size of the markers is proportional to the number of pairs in that particular bin. (N= 10,207; Source: Panel A)

Table S.1: Robustness Check Using Cultural Distance as a Continuous Measure for Heterogeneous Ties

	Full Sample						
	(1)	(2)	(3)	(4)	(5)	(6)	(7)
Overall Performance	0.0278*** (0.00231)	0.0184*** (0.00271)	0.0163*** (0.00263)	0.0173*** (0.00255)	0.0185*** (0.00273)	0.0135*** (0.00254)	0.0175*** (0.00272)
Cultural Distance (log)	-0.00820*** (0.00240)						
Overall Performance × Cultural Distance (log)	0.00592*** (0.00108)						
Diff. in Power Distance (log)		-0.00678* (0.00345)					
Overall Performance × Diff. in Power Distance (log)		0.00729*** (0.00155)					
Diff. in Individualism (log)			-0.0128*** (0.00327)				
Overall Performance × Diff. in Individualism (log)			0.00874*** (0.00155)				
Diff. in Masculinity (log)				-0.0123*** (0.00340)			
Overall Performance × Diff. in Masculinity (log)				0.00856*** (0.00157)			
Diff. in Uncertainty Avoidance (log)					-0.0107** (0.00339)		
Overall Performance × Diff. in Uncertainty Avoidance (log)					0.00756*** (0.00159)		
Diff. in Long-term Orientation (log)						-0.0101** (0.00318)	
Overall Performance × Diff. in Long-term Orientation (log)						0.0100*** (0.00156)	
Diff. in Indulgence (log)							-0.00943** (0.00343)
Overall Performance × Diff. in Indulgence (log)							0.00692*** (0.00165)
Pairs' Avg. Ages (log)	-2.803*** (0.405)	-2.906*** (0.381)	-2.891*** (0.381)	-2.891*** (0.381)	-2.901*** (0.381)	-3.186*** (0.347)	-3.035*** (0.363)
Pairs' Avg. Ranks (log)	-0.0501*** (0.00490)	-0.0532*** (0.00482)	-0.0539*** (0.00482)	-0.0539*** (0.00481)	-0.0537*** (0.00481)	-0.0479*** (0.00488)	-0.0488*** (0.00489)
Number of Years Playing Together (log)	0.404*** (0.00798)	0.402*** (0.00795)	0.397*** (0.00813)	0.398*** (0.00786)	0.399*** (0.00786)	0.398*** (0.00812)	0.406*** (0.00809)
Observations	20909	23247	23247	23247	23247	22534	22076
R ²	0.505	0.499	0.499	0.499	0.499	0.503	0.504
Fixed Effects:							
Year	Yes	Yes	Yes	Yes	Yes	Yes	Yes
Month	Yes	Yes	Yes	Yes	Yes	Yes	Yes
Player1	Yes	Yes	Yes	Yes	Yes	Yes	Yes
Player2	Yes	Yes	Yes	Yes	Yes	Yes	Yes

Notes: Standard errors in parentheses. * $p < 0.05$, ** $p < 0.01$, *** $p < 0.001$.

Table S.2: Tie Persistence in Close Match: Multiple Rounds

	Round1		Round2		Round3		Round4		Round5	
	(1)	(2)	(3)	(4)	(5)	(6)	(7)	(8)	(9)	(10)
Losing in the First Round	-0.0176 (0.0128)	0.00699 (0.0165)	-0.0116 (0.0167)	0.0187 (0.0225)	-0.0519* (0.0219)	-0.0395 (0.0283)	0.0269 (0.0264)	0.0607* (0.0291)	-0.0353 (0.0465)	0.0662 (0.0488)
Cross-country Ties		0.0431* (0.0189)		0.0536* (0.0270)		0.0778** (0.0285)		0.0843* (0.0350)		0.115* (0.0488)
Cross-country Ties x Losing in the First Round		-0.0399* (0.0170)		-0.0483 (0.0267)		-0.0178 (0.0298)		-0.0511 (0.0333)		-0.167** (0.0580)
Pairs' Avg. Ages (log)	-0.0758 (0.0583)	-0.0847 (0.0562)	0.0174 (0.0678)	0.00119 (0.0646)	0.00942 (0.0865)	-0.0227 (0.0837)	-0.106 (0.107)	-0.123 (0.105)	0.118 (0.135)	0.131 (0.129)
Pairs' Avg. Ranks (log)	-0.0640*** (0.0126)	-0.0612*** (0.0133)	-0.0490** (0.0155)	-0.0461** (0.0161)	-0.0259 (0.0163)	-0.0195 (0.0162)	-0.0254 (0.0168)	-0.0204 (0.0170)	0.00203 (0.0117)	0.000898 (0.0121)
Number of Years Playing Together (log)	0.315*** (0.0207)	0.323*** (0.0186)	0.255*** (0.0262)	0.265*** (0.0228)	0.209*** (0.0285)	0.234*** (0.0255)	0.169*** (0.0267)	0.191*** (0.0238)	0.0783** (0.0290)	0.0947** (0.0325)
Scores Diff. in the 3rd Set	0.00188* (0.000785)	0.00204* (0.000795)	0.00153 (0.00105)	0.00175 (0.00106)	-0.000944 (0.00140)	-0.000797 (0.00141)	0.00235 (0.00164)	0.00244 (0.00164)	-0.00182 (0.00203)	-0.00147 (0.00191)
Observations	9892	9892	4951	4951	2771	2771	1325	1325	244	244
R ²	0.377	0.378	0.337	0.338	0.267	0.273	0.264	0.271	0.220	0.263
Fixed Effects:										
Year	Yes	Yes	Yes	Yes	Yes	Yes	Yes	Yes	Yes	Yes
Month	Yes	Yes	Yes	Yes	Yes	Yes	Yes	Yes	Yes	Yes

Notes: Standard errors in parentheses. * $p < 0.05$, ** $p < 0.01$, *** $p < 0.001$.